

Ran-GTP

Catalog Number: 26915

Gene Symbol: RAN

Description: Anti-Ran-GTP Mouse Monoclonal Antibody

Background: Ran (Ras-related nuclear protein) is a member of the Ras-superfamily GTPases. Ran is involved in the transport of proteins across the nuclear envelope, as well as in microtubule organization during mitosis.

Immunogen: Recombinant full-length protein of active Ran

Tested Applications: IP, IHC, IF

Recommended Dilutions:

IP: 1 µg for 1~2 mg total cellular proteins

IHC, IF: 1:50-1:250

Concentration: 1 mg/ml

Host: Mouse

Clonality: Monoclonal

Isotype: IgG

Purity: Purified from ascites

Format: Liquid

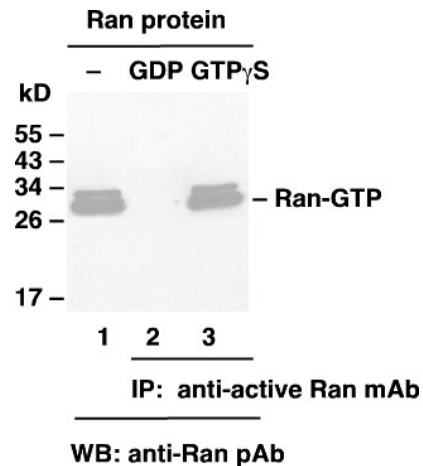
Preservative: No

Constituents: PBS (without Mg²⁺ and Ca²⁺), 150 mM NaCl and 50% glycerol, pH 7.4

Species Reactivity: Anti-Ran-GTP antibody recognizes active Ran of vertebrates

Storage Conditions: Store at -20°C. Avoid repeated freezing and thawing

Immunoprecipitation/Western blot



Ran Activation Assay.

Purified Ran proteins were loaded as a control (lanes 1) or immunoprecipitated after treated with GDP (lane 2) or GTP γ S (lane 3). Immunoprecipitation was done with the anti-Ran-GTP monoclonal antibody (Cat. No. 26915). Immunoblot was with the anti-Ran polyclonal antibody.

FOR RESEARCH USE ONLY. NOT FOR DIAGNOSTIC APPLICATIONS